

**CLIMATE PROTECTION needs
WOMEN Power
Gender Justice in Climate Policy**

*Presented by
Seema Gaikwad
Bonn
November 16, 2010*

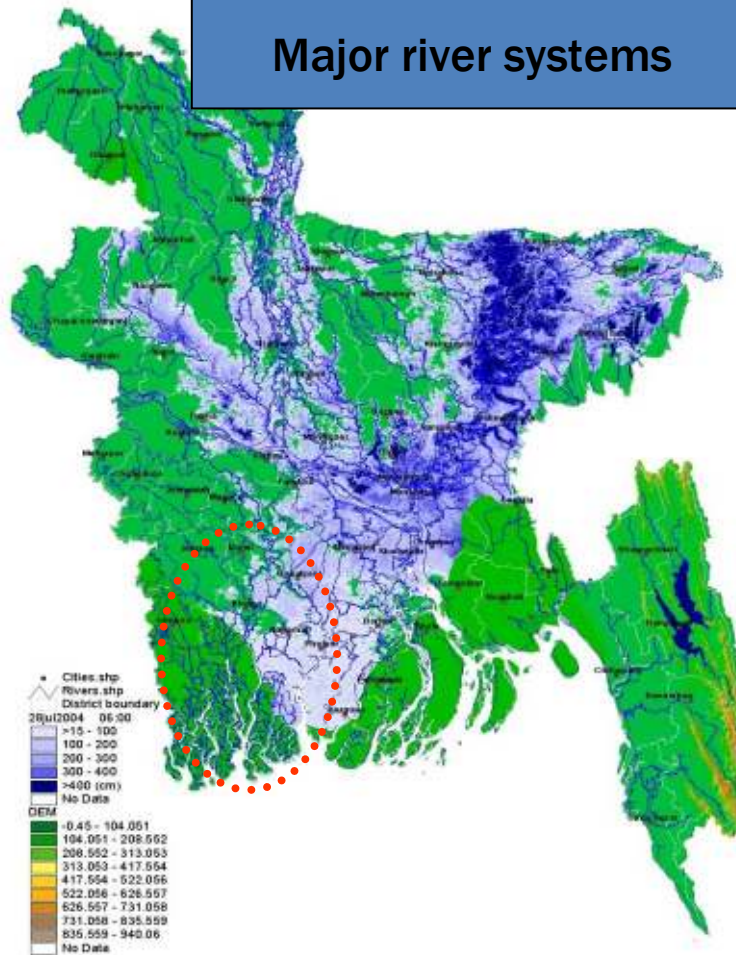
Impacts of Climate Change on Bangladesh



- Bangladesh is one the most vulnerable country because of its regional connectivity through geo-physical and hydrological features and its livelihood reliance on trade.
- The principal climatic hazards affecting Bangladesh – floods and cyclones
 - ❖ Are likely to increase in frequency, intensity, duration, and extent.
 - ❖ The summer monsoon rainfall is projected to increase, swelling the main river systems in the wider catchment, and boosting the rainfall impact within the country.

Impacts of Climate Change on Bangladesh

Major river systems



- Cyclones not only bring flood and wind damage but result in sea-level rise
- It is estimated that within a century the coastline will retreat by, on average, about ten kilometres, causing the loss of 18 per cent of the country's land area.
- This will mean that the impacts of cyclones will be felt further inland than they have been to date

Impacts of Climate Change on Bangladesh



- More rapid glacial melting in the Himalayan headwaters will also increase spring and early summer flows, further increasing the flood risk.
- In winter, problems of drought will increase.
- The current winter dry season (which already limits agriculture and particularly affects poorer farmers who cannot afford to irrigate) is likely to become significantly worse
- Bangladesh is experiencing a moderate temperature increase in post-monsoon seasons and strong warming (0.1°C - 0.3°C / per decade) during monsoon seasons.
- Most modeling predicts an increase in average rainfall from 8 percent to 15 percent by 2030. Increased rainfall is already resulting in flooding within the country and throughout the region.

Climate Change in Bangladesh

Government of Bangladesh

- **Bangladesh ratified its International commitments under the UNFCCC Addressing climate change issues as long-term environmental concerns first started in 1995 with the preparation of National Environmental Management Action Plan (NEMAP), which was prepared in 1995 in order to initiate the process of for Bangladesh signed onto the United Nations Framework Convention on Climate Change (UNFCCC) on 9 June 1992, ratified it on 15 April 1994 and ratified the Kyoto Protocol on 22 October 2001.**
- **The country is a non-Annex I Party to the Protocol, which means that it is not bound by specific targets for greenhouse gas emissions. The Department of Environment within the Ministry of Environment and Forestry is the focal point for the UNFCCC and coordinates climate-related activities in the country**
- **First country to finalize a National Adaptation Program of Action(NAPA)**

Climate Change in Bangladesh

Government of Bangladesh

- The Government of Bangladesh has allocated 100 million USD as climate funding for 2009-2010.
- The initiative is a pioneering one to challenge climate change through enhancing people's adaptive capacity.
- The Ministry of Environment and Forestry is already in the process of scrutinizing the proposals for on ground adaptation.

What is needed:

To address gender concerns in these programs

Bangladesh: Gender Context

- Half of Bangladesh's population is made up of women (48.9 percent)
- 80 percent of whom live in rural areas
- Women play an important role in a wide range of income-generating activities, but their contribution to the national economy is largely unaccounted for.
- Women in low-income households are heavily involved in economic activities, mostly around homestead-based production, which contributes up to 16 percent of the household income in Bangladesh (CPD 2004).
- Independent livelihoods managed by women-headed households are also an important aspect of the rural economy of South Asia and contribute to 15 percent of the rural households in Bangladesh (CPD 2000).

Neither of these percentages are accounted for in the GDP. ``



Bangladesh: Gender Context



- Status of women is derived from family
- Patriarchal system controls women's mobility, roles and responsibilities and sexuality
- Emphasis on women's reproductive value, therefore less access to higher education for girls
- Maternal mortality rate is one of the highest in the world
- Higher mortality rate for girl children due to differences in provision of food, nutrition and care
- Illiteracy rate is significantly higher for women than men
- Over 95% of female-headed households are considered to fall below the poverty line

Impacts of Climate Change on Women



These increased hazard impacts will affect women in particular, is extremely difficult to predict.

Link between poverty and vulnerability

- Effect on Health
- Physical Security and Dignity
- Economic Livelihoods

What we need

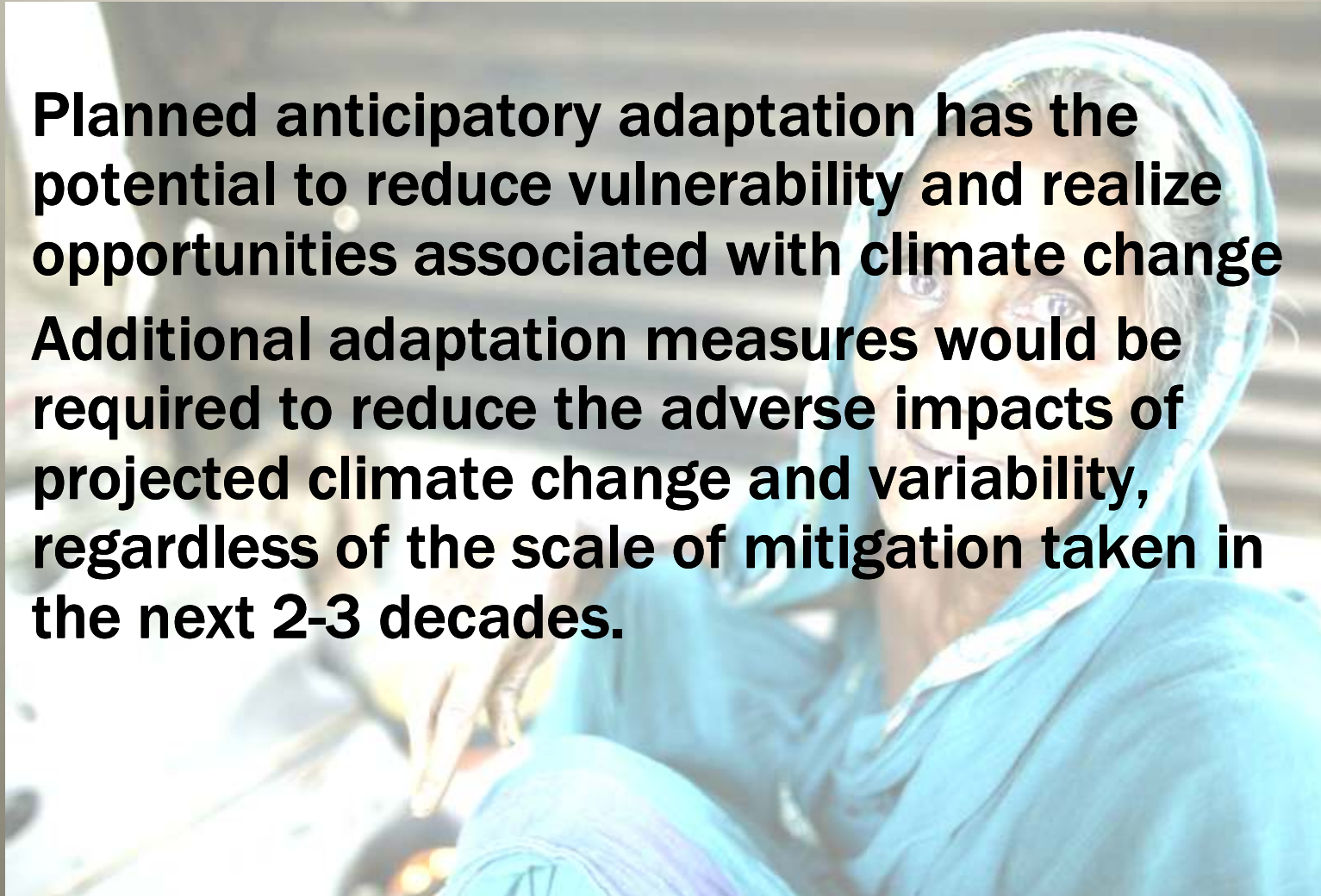
- **Specific gendered factors which it is essential to take into account in order to reduce the vulnerability of women.**
- **A greater/indepth understanding of gender and vulnerability**
 - **Women's nutritional status**
 - **Increased workload**
 - **Ability to Self protection**
- **Gender disaggregated data village to national levels**
- **Gender focused participatory vulnerability assessments at village levels**
- **Meaningful participation in planning, implementing, monitoring and evaluating for adaption at village, district, national, sub-regional, regional and global levels**

The Cost of Not Adapting

- **Adaptation can reduce the damage that will be caused by climate change, but cannot eliminate it. Cutting emissions now and adapting early will help to greatly reduce the (potentially very large) financial costs of that climate damage;**
- **Without rapid emissions cuts and strong support for adaptation, climate change may well unravel global stability.**

Adaptation is a necessity

- **Planned anticipatory adaptation has the potential to reduce vulnerability and realize opportunities associated with climate change**
- **Additional adaptation measures would be required to reduce the adverse impacts of projected climate change and variability, regardless of the scale of mitigation taken in the next 2-3 decades.**



Adaptation Strategies

Lessons from CARE Bangladesh



Challenging climate variability hydroponics gardening

**Plants, vegetables and seedlings
are grown on floating platforms:**

**This cultivation technique is an environmentally-
friendly way to grow vegetables year round, and
utilise natural resources. One of the most prevalent
aquatic plants of the wetlands in Bangladesh, the
water hyacinth is the primary building material for
floating gardens.**



Setting Afloat: The case of Anowara Begum



- *“I have my own land that for six months of every year becomes a water body. After attending the CARE Bangladesh training, I was encouraged to create a seed bed with my son, which took two days. Last year, I was able to grow pumpkin, beans, leafy vegetables, and also cultivate seedlings for the winter season. I have eight family members who depend on the floating garden for vegetables now. We used to spend up to 50 taka every day to meet the vegetable demands of the family, but now we can eat more, and incorporate different varieties of vegetables into our diets. Even though I lose my land for half the year, having a productive use for the water body that’s created is a blessing. Having seen the success of the floating garden, I will make a longer garden bed this year to increase my production and income.” Anowara*

Challenging Climate Variability

Duck rearing- a viable livelihood

Ducks float chickens don't

It was in 2007, Chameli had been identified and participated in duck rearing training as part of the SHOUHARDO community led development initiative. The program taught her all the skills necessary to hatch and rear ducks. In addition,

The Impact on Chameli's life:

Her greatest gains from the training was networking.

Here she was introduced to both buyers and suppliers in the poultry value chain and met other women who were beginning their voyages into business and self-determination.

Chameli was also introduced to several financial institutions capable of providing her capital.

All of these networks were crucial in developing her business and establishing her position within the value chain.

It has helped to diversify the income of Chameli's family

Whilst egg and duck consumption also supplement the nutritional outcomes of the family members.

With a 50,000 taka (USD \$700) loan from the bank and another 50,000 in savings, Chameli purchased a *tampu* for her son, a three wheeled vehicle capable of transporting 10 to 12 people. Her son now drives the *tampu* and earns between 500-700 taka a day.



Challenging Climate Variability

Homestead raising : Directly effects women

- A greatly improved environment during floods for carrying out domestic activities such as preparing and cooking food, child rearing, caring for elderly etc. all of which are the responsibility of women;
- Opportunity for year-round income and enhanced nutrition from homestead gardening;
- Better conditions for livestock rearing;
- Scope for greater mobility during the flood season as homestead area is more secure;
- Better conditions for giving birth;
- Access to safe drinking water during floods, resulting in improved family well-being and health, due to less diarrhea and skin disease;
- Better conditions for poultry and duck rearing;



Homestead raising

- **Problems during floods that remain after homestead raising are sanitation for women, lack of income earning and employment opportunities, and isolation.**
- **Women were empowered by raised homesteads due to several factors including increased bargaining power, improved access to markets, scope for developing income earning activities that continue throughout the flood, and enhanced capacity for leadership.**



Challenging Climate Variability: Breaking down the traditional barriers

Engaging Women in Food Security

Farida Parvin lives in Doani village with her husband Akkas Ali and her three children, Liza, Lalon and Nasim

Six years ago Farida and her family lost their home due to riverbank erosion, and the constant challenges of seasonal flooding mean Farida's family were in a constant struggle for survival. To make ends meet, Akkas Ali eventually left his family to find work as a day labourer in Dhaka, and Farida often went without rice so her children could eat. Once CARE began working in her village, Farida received training in vegetable gardening but she still could not address the family's chronic food insecurity during the rainy season.

With assistance from CARE, Farida and other women from the village formed the Tista Nari Oykko Dal (Tista Women's United Group), and Farida was appointed as President. Through group cultivation of vegetables, and the technical assistance and irrigation equipment provided by CARE, the women of the village were soon improving their food security. As the women began generating serious food security and income for the village, they also began challenging the traditional role of women.

With the money saved from their earnings the women's group established a community savings account and make regular deposits.

On a personal level, Farida has repaid her debts, and is able to buy food, clothing and educate her children. She regularly travels outside the village where she negotiates assertively with wholesalers and local government officials



Who should pay?

**How long should we
continue to adapt?**

Our Appeal

- **The EU has an opportunity to demonstrate leadership in the run up to Cancun and in Cancun with aggressive emissions reduction targets and robust support for international adaptation.**
- **Adaptation funding must be substantial, new and additional funding and must address the needs of the most vulnerable. Providing resources for community-based adaptation is key to promoting local solutions to climate change.**

Acknowledgements

CARE Bangladesh

**SHOUHARDO FOOD SECURITY PROGRAM
REDUCING VULNERABILITY TO CLIMATE CHANGE
ECONOMIC DEVELOPMENT UNIT
COMMUNITIES OF BANGLADESH**

PHOTOGRAPHS: Advocacy unit, CARE Bangladesh

THANK YOU